



Challenge workshop

Too small to either succeed or fail?
**Experiences of the first-year students in a
challenging two-campus (University of
Helsinki: Lahti & Viikki) setup**

Olli-Pekka Penttinen

University of Helsinki, Department of environmental sciences, Lahti

European First Year Experience 2016

April 4-6 2016, Ghent - Belgium

HELSINGIN YLIOPISTO
Helsingfors Universitet
UNIVERSITY OF HELSINKI

www.helsinki.fi/yliopisto

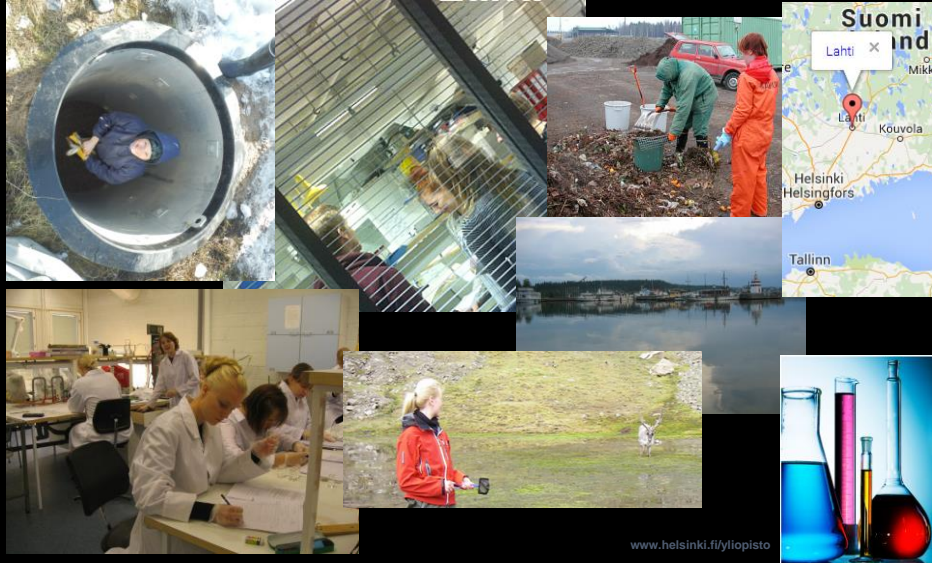


Faculty of Biological and Environmental Sciences





Department of Environmental Sciences, Lahti - An isolated part of the Viikki campus



Workshop outline:



Massive educational reform
Two campus approach
My university concept
Activity = three discussion points



BIG change

University of Helsinki is now under massive reform including all units of the university

The first example of a new academic direction is a broad **Environmental BSc program** covering six educational units including our own in UCLahti.

From our own perspective the most important and partly challenging FYE changes are

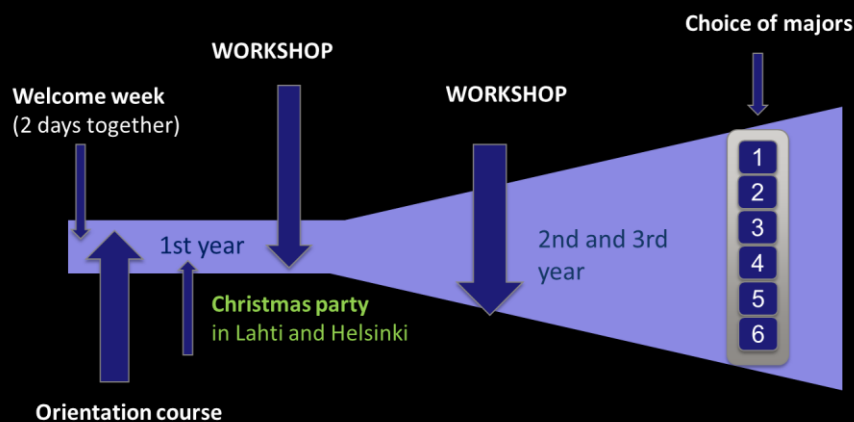
- 1) active contribution of main campus to tutoring processes
- 2) increased number of video streaming of lectures, and thus minimum amount of own first year courses in Lahti campus
- 3) two-campus set up in some of the introductory courses

HELSINGIN YLIOPISTO
HELSINGFORS UNIVERSITET
UNIVERSITY OF HELSINKI

www.helsinki.fi/yliopisto



New BSc program



HELSINGIN YLIOPISTO
HELSINGFORS UNIVERSITET
UNIVERSITY OF HELSINKI

www.helsinki.fi/yliopisto



Orientation course (24 h + evening party)

Forms of teaching

- lecture
- workshop
- group work
- other



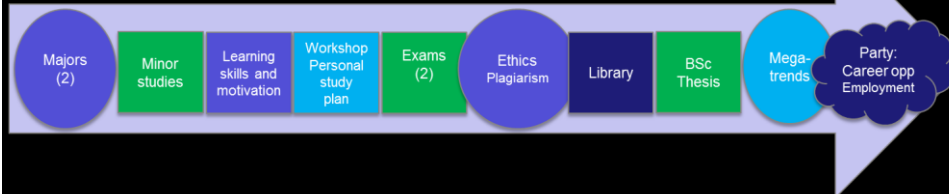
= streamed connection



= face to face teaching



= all students present



WARNING!!!!



Time for the activity!



THREE DISCUSSION POINTS

Each group/table will have one point to be discussed



Group color codes

Formulate one major question/comment to other groups, and give one supportive comment to workshop leader

Share for 7 minutes on your table

HELSINGIN YLIOPISTO
HELSINGFORS UNIVERSITET
UNIVERSITY OF HELSINKI

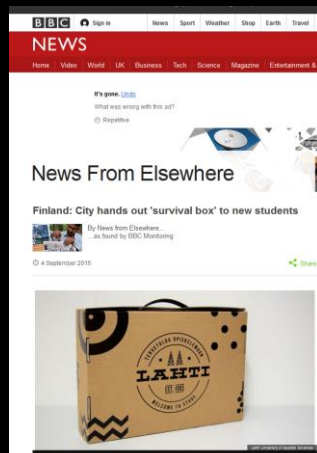
www.helsinki.fi/yliopisto



#1



Should we be happy now ? Create a content of new First Year Experience survival box



HELSINGIN YLIOPISTO
HELSINGFORS UNIVERSITET
UNIVERSITY OF HELSINKI



yliopisto



#2



Our survival story is quality of the students, strong motivation, dedicated staff members, positive attitude and support from the Faculty, and a small institutional size. Altogether these factors creates welcoming atmosphere that encourages students to engage with the institution and to develop a sense of belonging.

How to keep these positive issues in a new situation where the most of the activities are related to other campus area?

HELSINGIN YLIOPISTO
HELSINGFORS UNIVERSITET
UNIVERSITY OF HELSINKI

www.helsinki.fi/yliopisto



#3



It is very hard to fight against geography, and a part of the students are staying more or less permanently in Helsinki, and many of them are changing their majors after BSc.

“Are we just too small and remote unit to survive or can we truly operate at two campus areas?”

HELSINGIN YLIOPISTO
HELSINGFORS UNIVERSITET
UNIVERSITY OF HELSINKI

www.helsinki.fi/yliopisto



THANK YOU!

Olli-Pekka Penttinen
University lecturer
olli-pekka.penttinen@helsinki.fi,

Janna Pietikäinen,
University lecturer
janna.pietikainen@helsinki.fi,